

PHILOSOPHY



---

# PRECIOUS AND RARE

---

Precious and rare are words that signify Takai. Our philosophy, and the Takumi symbol, express skill, aptitude and dexterity.

The manual qualities that are also those of a creative Artisan hairstylist.

**EXPERTISE 04**

**SG2 STEEL 06**

FUDO  
MEKA

**SUMMUM STEEL 08**

SUMMUM  
HAKAMA

**HIP STEEL 10**

**KARAKURI CONCEPT 11**

KARAKURI BA  
KARAKURI CB  
KARAKURI MA  
KARAKURI MB  
KARAKURI MC  
KARAKURI SWO

**VG-10 COBALT STEEL 16**

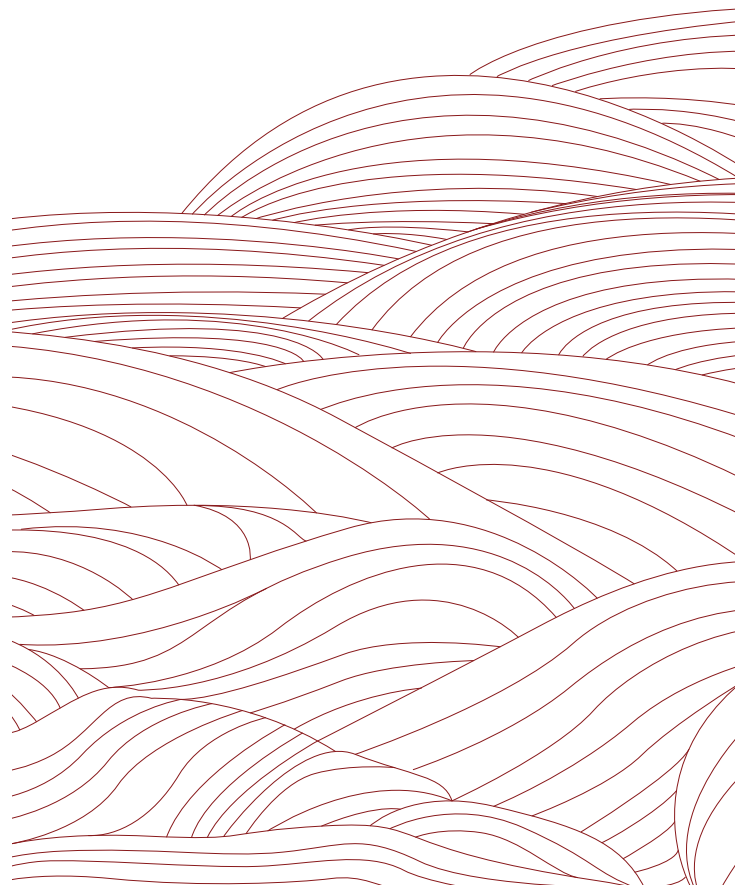
NAMBA  
TOUCAN  
MEIJI 7  
PELICAN  
CORUM  
HYBRID  
GINZA  
CORUM FL  
CISELOR  
EUROPA

**SUS 440C ENRICHED STEEL 22**

HOKUSAI  
VSP2  
AKIO  
AKIO FL  
EIKI  
VUH 420  
ZOOM  
DUAL  
JUNKO  
ODYSSEE  
OXALIS  
BARBER  
LINEA

**RAZORS & BLADES 30**

PROSHAVE  
PLATINUM  
TWO-IN-ONE



---

# EXPERTISE

---

**BETWEEN**

**TECHNOLOGICAL**

**AND TRADITION**

---





### **TECHNOLOGICAL INNOVATION:**

- **The selection of the best steels.**
- **The ergonomic design of the models.**  
Computer-Aided-Design, digital software that creates 3-dimensional models of the hand, simulates the specific constraints acting on the muscles and tendons and then creates innovative designs that support your technical movements, for indispensable working comfort.
- The manufacturing of models on digitally-controlled machines.

### **RESPECT FOR TRADITION:**

- **Sharpening and polishing performed entirely by hand by our master sharpeners.**
- A highly-detailed ancestral technique, Hamaguri convex sharpening uses a series of 7 grinding angles for an extreme edge combined with great cutting softness.
- It is a very powerful technique since the curve of the blade is perfect up to the wire. Thus, the edge of the blade forms an integral part of the blade mass for greater rigidity and longevity.

---

# SG2 STEEL

---

## **An unforgettable experience**

Considered among one of the best steels in the world for its incomparable quality, Japanese SG2 steel is made from powdered steel created by sintering. This specific process results in a Rockwell\* degree of 63 HRC for a durable, sharp and unprecedented cutting edge.

SG2 steel is manufactured from a combination of powdered carbon, chrome, molybdenum, vanadium and manganese, which produces a precise and extremely soft cut.

The Meka and Fudo scissors pair embody the quintessence of our expertise: the symbiosis of technological innovation with the respect for traditional blades. They're two creations of unprecedented technical feats for the pleasure of artisan stylists, passionate about beautiful objects.

Unique details make the difference, because excellence is never a question of chance.

\*Rockwell hardness scale: the measurement of steel hardness

# FUDO



## A masterpiece of lightness and power

Perfect handling and unexpected lightness. The use of titanium handles gives FUDO its unique, airy character. A refined allure endowed with captivating power and cutting precision. FUDO embodies the richness of materials with its titanium handles and its blades made from SG2 steel.

**Size: 5.5"/6.3" inches**

Titanium handles  
Blade pressure adjustment system with ball bearings  
Integrated finger rest

# MEKA



## Millimeter precision with maximum power

MEKA offers a singular design with its sophisticated mechanism for unconstrained cutting pleasure. The extreme precision of its blade will transform all hair types. Intended for stylists who like to feel the tool in their hand, its ergonomic design also helps to prevent issues of MSD\*. The cutting sensation is unique, very powerful and yet fluid, thanks to its system of dual ball bearings and the use of SG2 steel. An extraordinary jewel for the most passionate stylists.

**Size: 6"/6.3" inches**

Blade pressure adjustment system with dual ball bearings  
Integrated finger rest

\*Musculoskeletal Disorders

---

# SUMMUM STEEL

---

## Invitation to Excellence

This alloy is enriched with vanadium, molybdenum, cobalt, chrome, tungsten and manganese.

The perfect combination of these elements gives the steel exceptional properties:

- improved resistance to corrosion and tarnishing,
- reinforced anti-oxidant properties,
- increased strength.

Especially recommended for cutting dry hair.



# SUMMUM



## Desire for Perfection

Pure lines with double sharpening for an exceptional cutting edge. In addition to Hamaguri convex sharpening, The Summum has the Miracle Slit, micro incisions on the edge of the blade. As a result: With straight cutting, the Summum lets you cut thick strands, with the micro-slits collecting the hair; with thinning-sliding, the movement is precise and quick while combining cutting softness.

**Size: 5.5"/6.3" inches**  
Screw blade pressure adjustment system  
Integrated finger rest

# HAKAMA



## A Unique Style

A distinctive blade design for an exceptionally powerful cut.  
Instinctive feel thanks to the curved thumb ring.  
An unlimited cutting pleasure.

**Size: 5.5"/5.8"/6.3"/6.8" inches**  
Screw blade pressure adjustment system  
Integrated finger rest

---

# HIP STEEL

---

## **The Signature of High Technology**

A new generation of sintered or powdered steel, HIP is a process of Hot Isostatic Pressing.

Nano-particles of the best steels are selected, then compacted and compressed under heat in an oven by more than 1,500 presses.

This manufacturing process results in pure, very dense steel for increased durability of the blade edge and greater cutting pleasure.



---

# KARAKURI CONCEPT

---

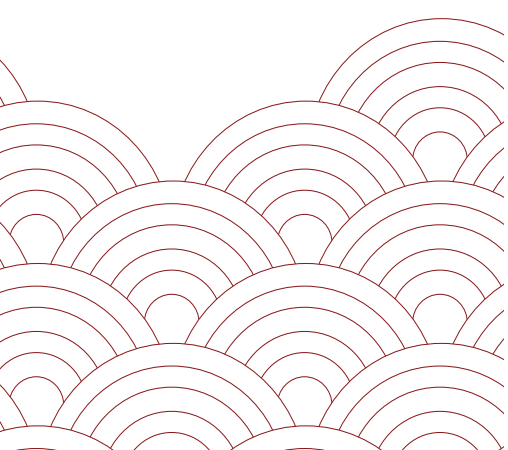
## Personalized Excellence

In Japanese, Karakuri means a clever device. Create your own pair of scissors based on your personal comfort and technical needs. This innovative, patented concept lets you save money by repurchasing only the blades.

Made of Premium HIP powdered steel, the KARAKURI line lets you choose from 5 handle designs and 4 blade lengths, based on your cutting techniques. Master volume with your choice of 2 thinning scissors (15 or 30 teeth).

Prevent musculoskeletal disorders with 3 optional SWO rotating rings. Optional urethane-coated handles for ultra-sensitive hands.

Personalized for your ultimate cutting pleasure!



## Comfort

The urethane coating is a comfort option. It's designed for ultra-sensitive hands and offers greater adherence.



## Effect

T15 lets you remove up to 35% of the thickness.



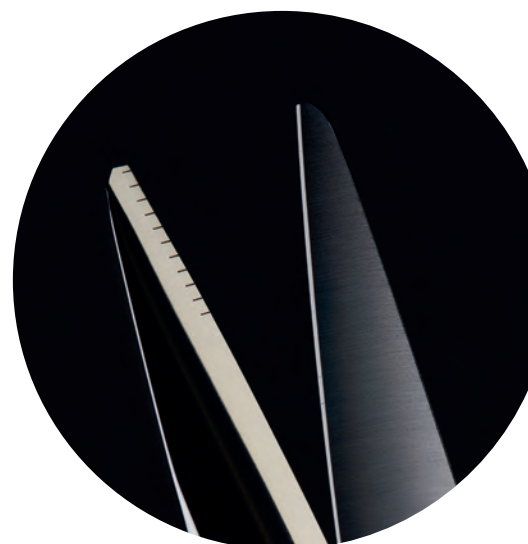
T30 lets you remove up to 20% of the thickness.



## Miracle Slit

### AN INGENUOUS CONCEPT OF EXCELLENCE!

With straight cutting, the Miracle Slit lets you cut very thick strands as the micro slits at the edge collect the hair. With thinning-sliding, the motion is precise and quick, with softness and cutting fluidity thanks to the Hamaguri sharpening. Option available on 5"/5.5"/5.8" and 6.3" inch blades.



## KARAKURI BA



### Elegance and Passion for Cutting

On the handles of the BA model, the fleur-de-lys recalls the elegance of the materials, cutting pleasure and a Japanese homage to France. In the language of flowers, the lily evokes the nobility of sentiment, passion and enthusiasm. In Japan, this historic flower is also one of the symbols that evoke France. A pair of scissors with Sacred Character. Offset ergonomics with a curved finger rest for optimal handling.

**Size: 5"/5.5"/5.8"/6.3" inches**  
**15 teeth/30 teeth**

Screw blade pressure adjustment system  
Integrated Finger Rest

## KARAKURI CB



### A Beautiful Best Seller

On the handles of the Model CB, the finely sculpted grooves reveal the beauty of a cutting tool whose ergonomics account for some of the best sales of Takai Technology scissors. Intuitive handling made beautiful by guillochage detailing.

**Size: 5"/5.5"/5.8"/6.3 inches**  
**15 teeth/30 teeth**

Screw blade pressure adjustment system  
Integrated Finger Rest

## Strength and Power!

On the handles of the Model MA, MB and MC the stylistic element is the refined guillochage on the rings recalling the «Great Wave of Kanagawa», the famous Japanese print by the celebrated painter Hokusai. The Strength and Cutting Power of Japanese blades.

### KARAKURI MA

Because of the symmetrical design of these scissors, they can be used by both right-and left-handed stylists.



**Size: 5"/5.5"/5.8"/6.3" inches**  
**15 teeth/30 teeth**  
 Screw blade pressure adjustment system  
 Double removable finger rests

### KARAKURI MB

Handling is optimized by the support tab on the scissor's upper handle.



**Size: 5"/5.5"/5.8"/6.3" inches**  
**15 teeth/30 teeth**  
 Screw blade pressure adjustment system  
 Removable finger rest

### KARAKURI MC

MC scissors offers symmetrical ergonomics with double support tabs for reversible use with comfort.



**Size: 5"/5.5"/5.8"/6.3" inches**  
**15 teeth/30 teeth**  
 Screw blade pressure adjustment system  
 Double removable finger rests



# KARAKURI SWO

## Special TMS Comfort Option

While design and working comfort are priorities in the creation of all our scissors, we're offering a model that's more specifically adapted to the prevention of musculo-skeletal disorders (MSD), the Model SWO. The 360° rotating ring on the Model SWO reduces tension on the wrist, tendons and shoulders as you cut. This comfort option prevents and soothes problems like carpal tunnel syndrome, a common problem for stylists. The feel is natural because the thumb can move. It can follow the cutting movement with perfect precision without requiring movement of the shoulders and contractions of the stylist's hand. Undeniable working comfort to preserve your health and career. Offered on the Karakuri line, this option also allows you to keep your handles and just repurchase the blades. So, these scissors are a profitable but also durable investment.

**Size: 5"/5,5"/5,8"/6,3" inches**  
**15 teeth/30 teeth**

Screw blade pressure adjustment system  
 3 sizes of rotating ring available  
 Integrated Finger Rest



---

# VG-10 COBALT STEEL

---

## A Fusion of Knowledge

The properties of the super alloy VG-10 Cobalt give the scissors increased strength for greater resistance to wear and cutting softness.

These models are especially recommended for cutting dry hair.



# NAMBA



## A powerful character

A powerful blade with a very futuristic design, NAMBA illustrates strength in cutting. Its exceptional grip adapts naturally to give free rein to all your techniques. Extremely precise right down to the tip, it cuts with astonishing fluidity whatever the density of the hair - nothing stands in its way. NAMBA is a pair of scissors with character for the pleasure of demanding hairdressers.

**Size: 6"/6.5 inches**

Blade pressure adjustment system with dual ball bearings  
Integrated finger rest

# TOUCAN



## The Incarnation of Strength

Wide and firm, the 58 mm blades enable strong movements for creating volume while maintaining softness in the feel of the cut.

**Size: 5.8" inches**

Screw blade pressure adjustment system  
Integrated finger rest

## MEIJI7



### Extreme Blades

A clean, precise cut for devotees of English techniques or male styles.

**Size: 7" inches**

Screw System mounted on a ball bearing  
Double removable finger rests

## PELICAN



### Curved Design

An invitation to dynamic cutting with subtle slicing moves.

**Size: 5"/5.5" inches**

Screw blade pressure adjustment system  
Integrated finger rest

## CORUM



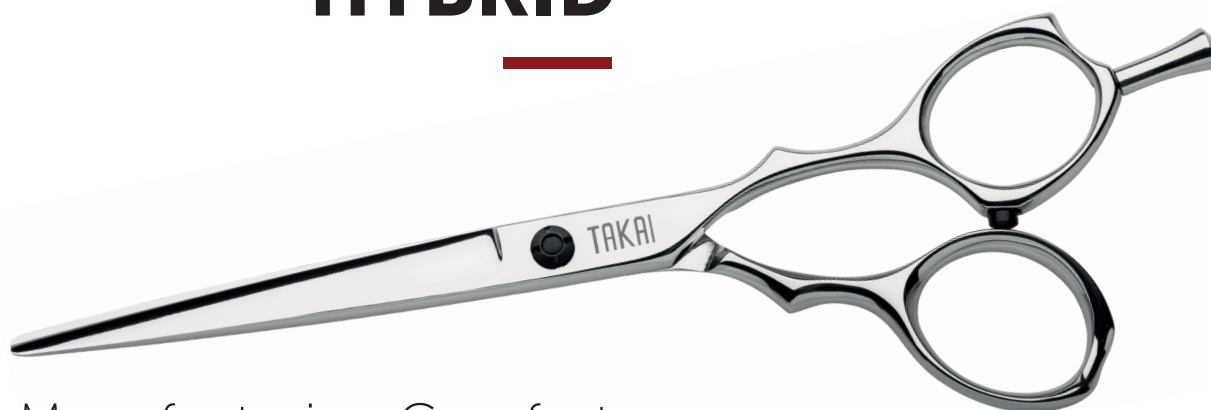
### Natural Esthetics

An intuitive feel for increased versatility in cutting techniques.

**Size: 5.5" inches**

Screw blade pressure adjustment system  
Integrated finger rest

## HYBRID



### Manufacturing Comfort

Precise control for straight cuts and dynamic ease in slicing movements are guaranteed thanks to the curved design of the thumb ring.

**Size: 5"/5.5"/6" inches**

Screw System mounted on a ball bearing  
Removable finger rest

## GINZA

---



### The Symbol of Elegance

Perfect balance and stability thanks to the agile design of the inside handle.

**Size: 5"/5.5" inches**

Screw blade pressure adjustment system  
Integrated finger rest



## CORUM FL

---

### For the Most Demanding Left-Handed Stylists

Impeccable straight cutting, precise point cutting and controlled slicing thanks to its sharp cutting edge.

**Size: 5.5"/6" inches**

Screw blade pressure adjustment system  
Integrated finger rest

## CISELOR



### The Creator of Effects

A bold tool that texturizes the hair for deconstructed styles.  
For devotees of the technique.

**Size: 14 dents**

Can be used on dry hair  
Screw blade pressure adjustment system  
Removable finger rest

## EUROPA



### The Mastery of Volume

Precision and softness for thinning, the signature of  
a high-quality thinning scissor.

**Size: 30 teeth (Europa 300)/40 teeth (Europa 640)**

Screw blade pressure adjustment system  
Removable finger rest

---

# SUS 440C STEEL

ENRICHED WITH VANADIUM AND MOLYBDENUM

---

## Quality without compromise

This alloy guarantees the scissors a sharp cutting edge and good wear resistance.

The properties of Vanadium and Molybdenum increase the blade rigidity and reinforce the anti-corrosion action.

# HOKUSAI



## The creative movement

The very modern design of the Hokusai's handles makes for an innovative and comfortable grip, giving you a sure hand and a fluid cut with a blade that lets you mix all your techniques. The Hamaguri sharpening system and ball-bearing system make for smooth, precise stabbing and sharp cutting, and the aerial design evokes the movement and creative power of the works of the famous Japanese artist Hokusai. For endless cutting pleasure!

**Size: 5.5"/6" inches**

Blade pressure adjustment system with dual ball bearings  
Removable finger rest

# VSP2



## A Timeless Classic

Minimalist design for an extreme cutting edge.

**Size: 4.5"/5"/5.5"/6" inches**

Screw blade pressure adjustment system  
Removable finger rest



## AKIO

---



### Efficient Style

A comfortable grip for all types of cuts.

**Size: 5"/5.5"/6.3"/7" inches**

Screw System mounted on a ball bearing  
Integrated finger rest



## AKIO FL

---

### Efficiently designed for left-handed stylists

Optimal for straight cuts, precise point-cutting. A comfortable grip ensures wide versatility for all cutting techniques.

Exclusively reserved for left-handed stylists.

**Size: 5.5"/6" inches**

Screw System mounted on a ball bearing  
Integrated finger rest



## EIKI



### Double-Sided

In the Japanese method, with the teeth down, it avoids any mark on the hair.  
In the European method, with the teeth up, it's a classic thinning scissor.

**Size: 5.5" inches**  
Screw System mounted on a ball bearing  
Removable finger rest

## VUH 420



### Double-Sided

In the Japanese method, with the teeth down, it avoids any mark on the hair. In the European method, with the teeth up,

**Size: 42 teeth**  
Screw blade pressure adjustment system  
Removable finger rest

## ZOOM



### Precision Goal

The short handles let you perform a very close cut.

**Size: 5.5" inches**  
Screw blade pressure adjustment system  
Removable finger rest

## DUAL



### Assured Character

For stylists who like to feel the scissors in their hand.

**Size: 5"/5.5" inches**

Screw blade pressure adjustment system  
Removable finger rest

## JUNKO



### An Ethereal Profile

Thin blades.

**Size: 5.5" inches**

Screw System mounted on a ball bearing  
Integrated finger rest

# Soft Curves

Finesse and cutting precision

## ODYSSEE



Perfect Symmetry

**Size: 5.5" inches**

Screw blade pressure adjustment system  
Removable finger rest

## OXALIS



Slightly curved

**Size: 5.5" inches**

Screw blade pressure adjustment system  
Removable finger rest



---

# THE ART OF GUILLOCHAGE

---

« Details make perfection,  
and perfection is not a detail »

Leonardo da Vinci.

This collection affirms the values of artisans, the love of beautiful objects and precision. Both the knowledge of handwork and new technologies are highlighted.

For devotees of beautiful tools!

*Guillochage is created by decorating a surface with parallel lines, straight lines or curved marks that may or may not intersect.*

## BARBER

---



### Authentic and Precise

With its straight lines for simple elegance and guilloché on the handles for complex geometry, Barber is a hymn to rigor, perfectionism and mastery of the gesture. An homage to the profession.

**Size: 5.5" inches**

Screw blade pressure adjustment system  
Removable finger rest

## LINEA

---



### An Iconic Model

A highly-successful brand in 1999, this new edition symbolizes an era of sophistication. The grip is ultra-natural, thanks to the sculpted surface, for perfect control of the handles.

Truly the art of detail.

**Size: 5.5" inches**

Screw blade pressure adjustment system  
Removable finger rest

---

# RAZORS

---

## PROSHAVE

---



### The Art of Shaving

For barbers who want extreme precision in the cutting edge.

*Delivered with a dispenser of 24 platinum-enriched blades*



# PLATINUM



## Concentrated Efficiency

Great precision for finishing work and thinning in classic cuts. Barbers will also appreciate the rigidity of these blades for the close feel of a traditional straight razor. The platinum-enriched blades offer durability and an exceptional cutting edge.

*Stainless steel razor  
Delivered with a dispenser of 10 platinum-enriched blades*

# TWO-IN-ONE



## Double the Lifespan of classical Blades

Light and ergonomic, this thinning razor meets all your technical needs. Its patented design provides for a lifespan that is double that of classical blades. Quality thinning is assured.

*Delivered with a safety dispenser for blade replacement  
Delivered with a dispenser of 10 platinum-enriched blades*

---

# THE TAKAI WARRANTY

---







## TAKAI MEANS QUALITY, BUT ALSO SERVICE



Each pair of Takai scissors comes with 2 free sharpenings over an unlimited period of time.

Only our workshops are certified to perform these check-ups, which include checking the tips and blade curvature, readjusting the handles and replacing parts, if necessary.

If you drop your scissors, don't worry. Our know-how enables us to restore your favorite tool.

For more information about our customer service shipment methods, contact us: by e-mail at [service@takai-technology.com](mailto:service@takai-technology.com) or on our website at [www.takai-technology.com](http://www.takai-technology.com)



[www.takai-technology.com](http://www.takai-technology.com)

 [www.facebook/TakaiTechnology](https://www.facebook.com/TakaiTechnology)

 [www.instagram.com/takaiscissors](https://www.instagram.com/takaiscissors)

 [youtube@temainstruments](https://youtube@temainstruments)